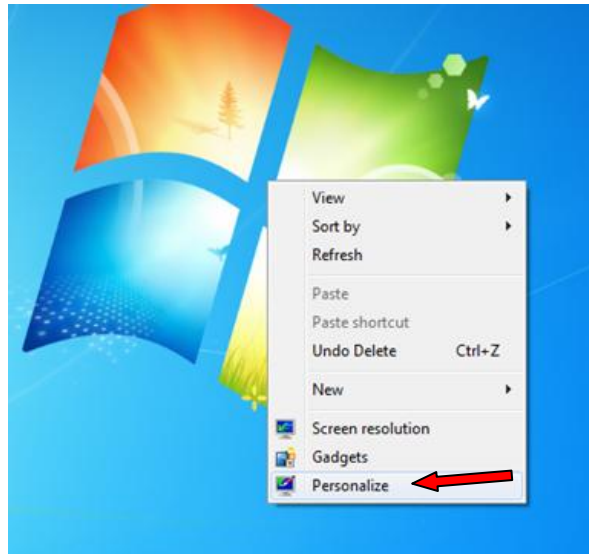
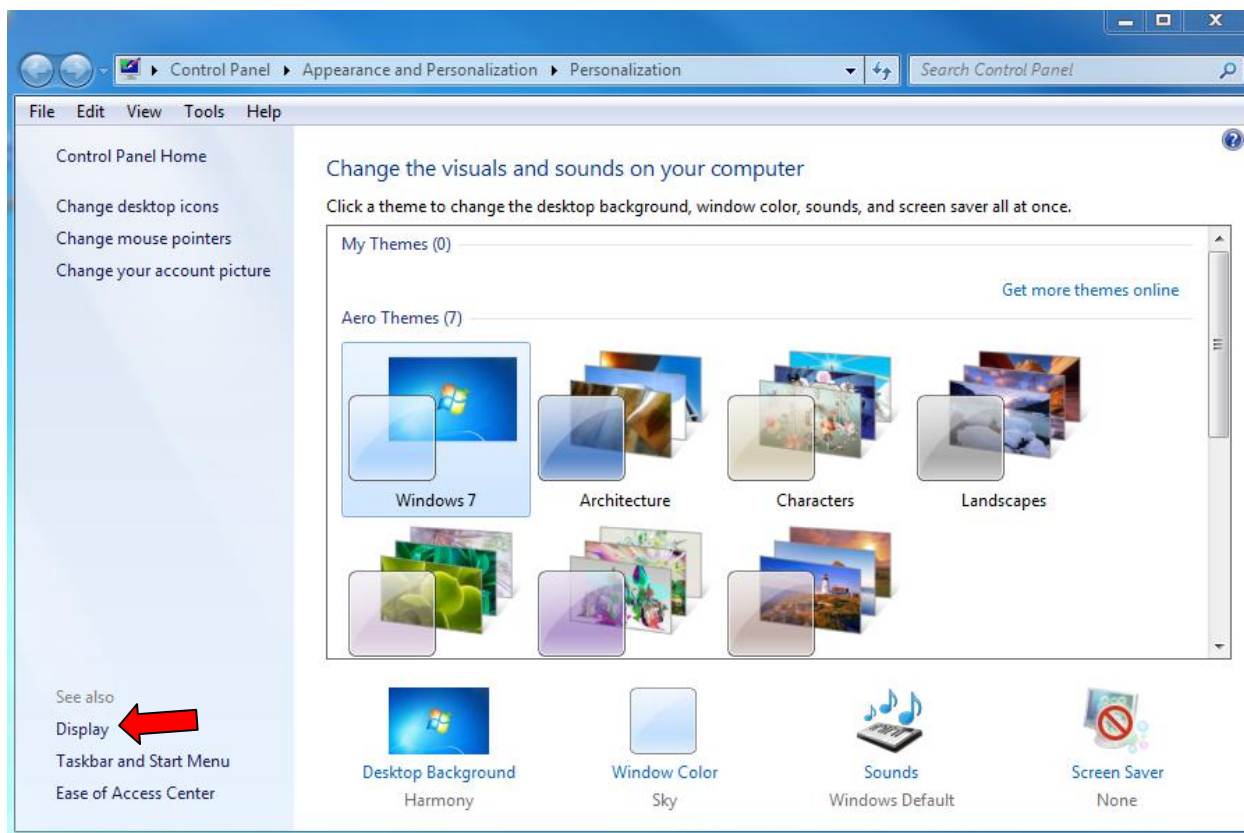


## To Change your Window 7 DISPLAY for the Data Projector

Right Click on your desktop in the middle and in the menu that pops up select **Personalize**.

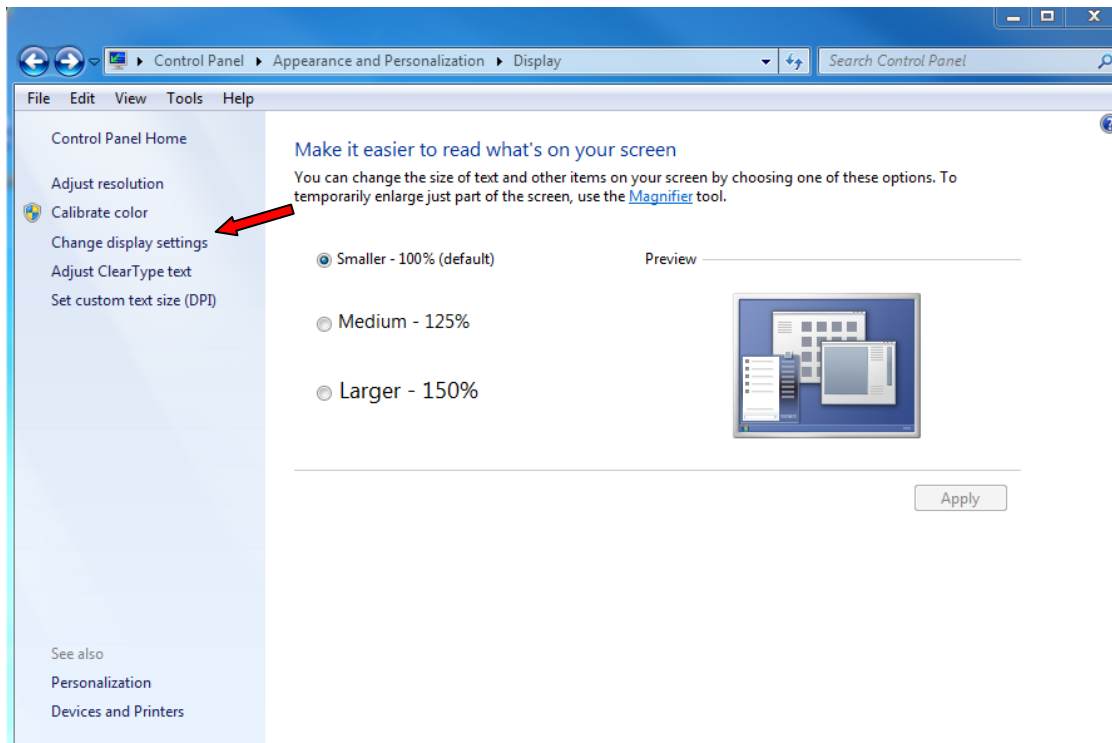


On the next screen select **Display** in the bottom left corner.



## To Change your Window 7 DISPLAY for the Data Projector

Next screen, select **Change Display Setting**



Change Multiple Displays: to Extend or Duplicate these Displays. Duplicate these Displays use to be called Clone. Be sure to click OK before leaving screen.

